



Station Grove

LOT 21 | The Crimson

Discover the Crimson home on Lot 21 at Station Grove. This move-in ready, stunning home is everything you've been dreaming of! Featuring a timeless light color scheme that adds a touch of country charm, this home boasts 2,616 square feet, including a legal 1-bedroom suite with a private entry. The great room impresses with its double-height ceilings, and the spacious backyard is perfect for outdoor gatherings.

Situated between the vibrant Langley and convenient Abbotsford, Station Grove offers a welcoming neighborhood where you can enjoy the best of both worlds. With popular Langley restaurants and shopping just a short drive away, you'll have access to short commutes, great local shopping, and outdoor adventures. Your perfect lifestyle balance is waiting for you at Station Grove!



+604-381-5995



www.Foxridgehomesbc.com/communities/station-grove



27744 Track Place, Abbotsford BC

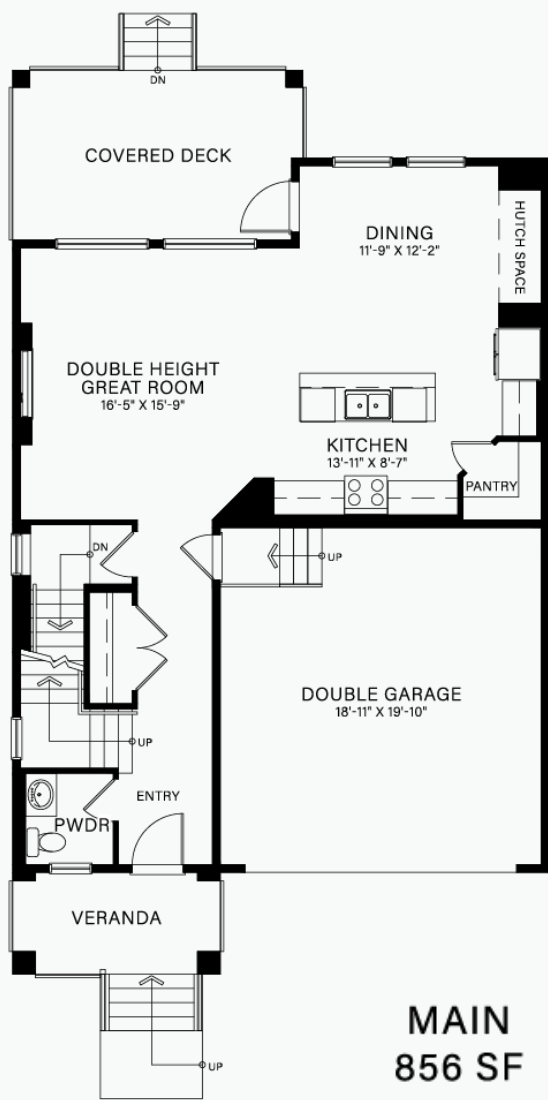
STATION GROVE



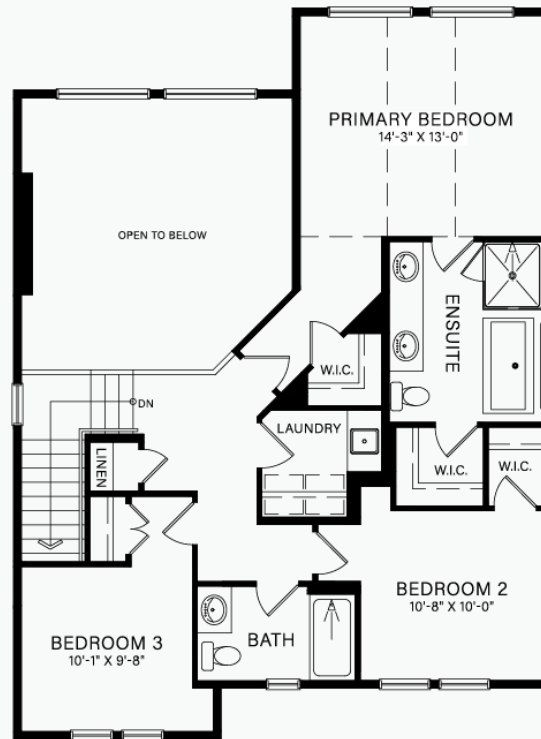
FOX RIDGE
HOMES

HELPING BUILD
BETTER CITIES™

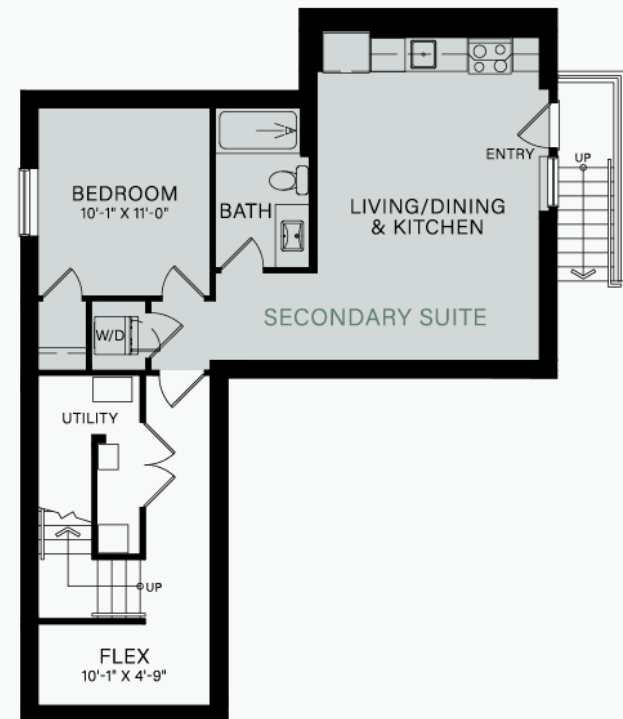
A QUALICO Company



MAIN
856 SF



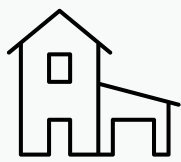
UPPER
904 SF



LOWER
856 SF



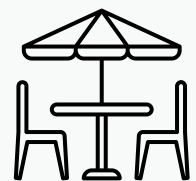
LG Appliance
Package



1-Bedroom
Legal Suite



Walk-in Closet in
Primary



Extended Backyard



4 Bedrooms



3.5 Bathroom



Modern kitchen
with island &
walk-in pantry



2-Car Garage



+604-381-5995



www.Foxridgehomesbc.com/communities/station-grove



27744 Track Place, Abbotsford BC

*Images are for illustration purposes only. The builder reserves the right to make changes and modifications to the information contained herein at any time, including pricing. E. & O.E.



+604-381-5995



www.Foxridgehomesbc.com/communities/station-grove



27744 Track Place, Abbotsford BC

*Images are for illustration purposes only. The builder reserves the right to make changes and modifications to the information contained herein at any time, including pricing. E. & O.E.